

WHEEL CYLINDER CIRCLIP

Triumph TR7, 2000/2500/2.5pi, Rover SD1,
MGB

Part Number: **RP2182**

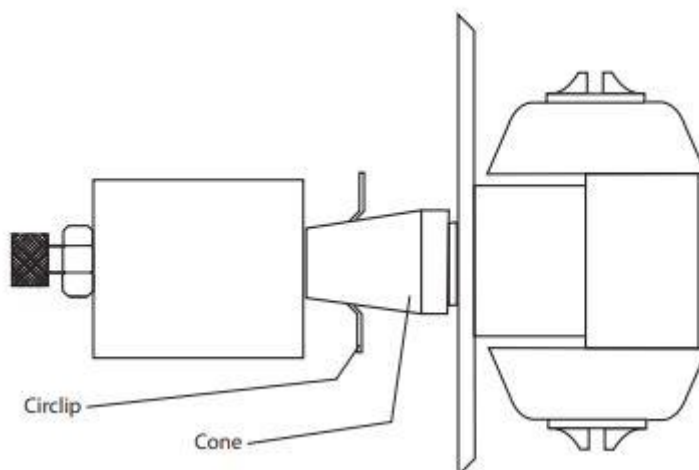
What you will need:

Grease

Piece of wood to wedge the brake pedal.

1. Remove the bleed screw and fit the wheel cylinder to the back plate. Replace the bleed screw.
2. Smear the cone and circlip with grease. Fit the tool to the wheel cylinder as shown.
3. Place the circlip onto the cone with the locking tabs facing away from the back plate.
4. Tighten the nut until the circlip has locked into the groove.
5. Remove the tool from the wheel cylinder

NOTE: To prevent the fluid draining from the master cylinder, cut a length of wood to wedge between the brake pedal and the driver's seat. The pedal needs to be depressed about 1" (25mm).



QUALITY PARTS AND ACCESSORIES



Triumph House, Sleaford Road, Bracebridge Heath, Lincoln LN4 2NA, England

UK Tel: +44 (0)1522 568000 | USA Tel: 1 855 746 2767 | Fax: +44 (0)1522 567600 | E-mail: sales@rimmerbros.com

www.rimmerbros.com